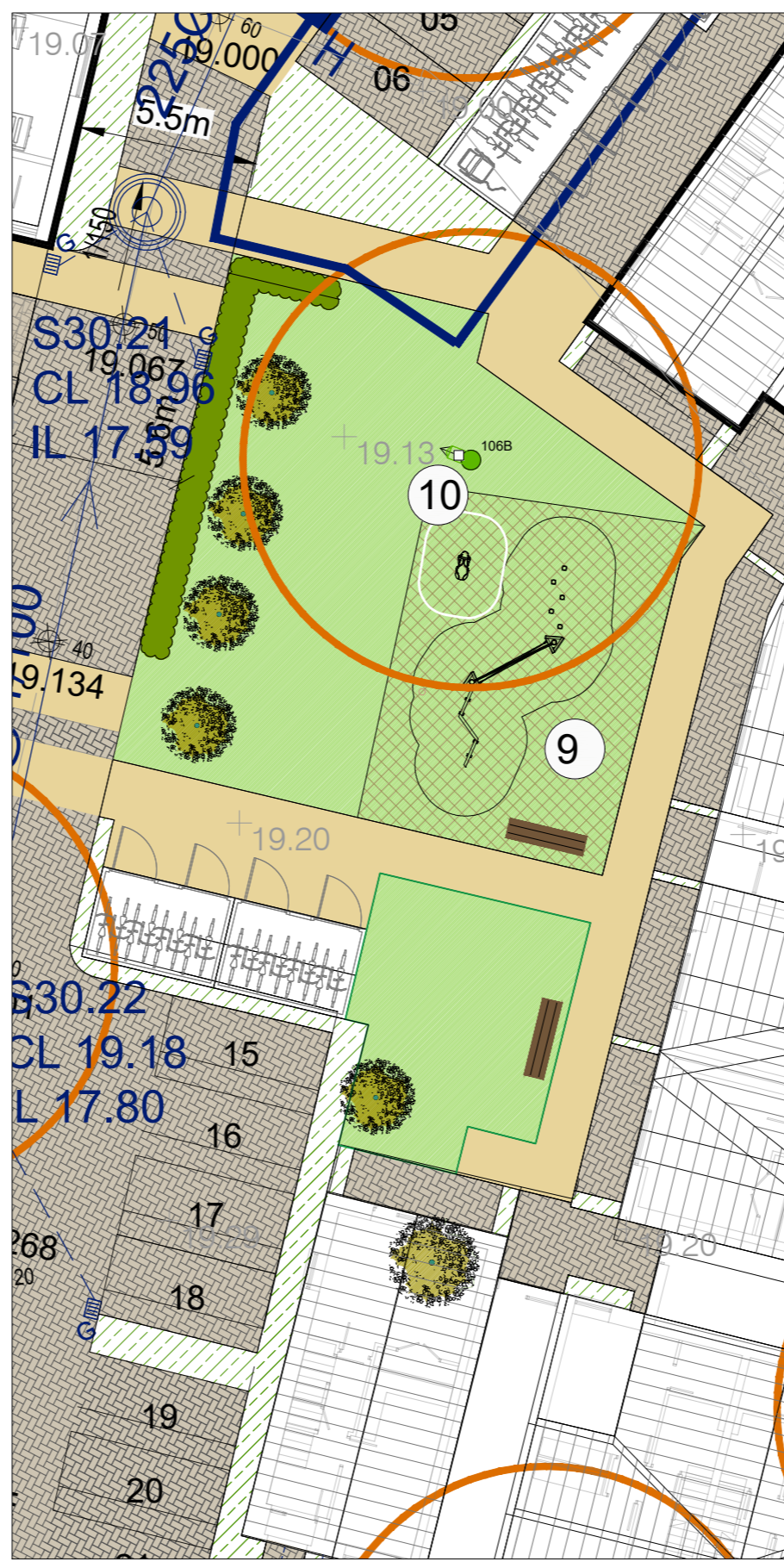
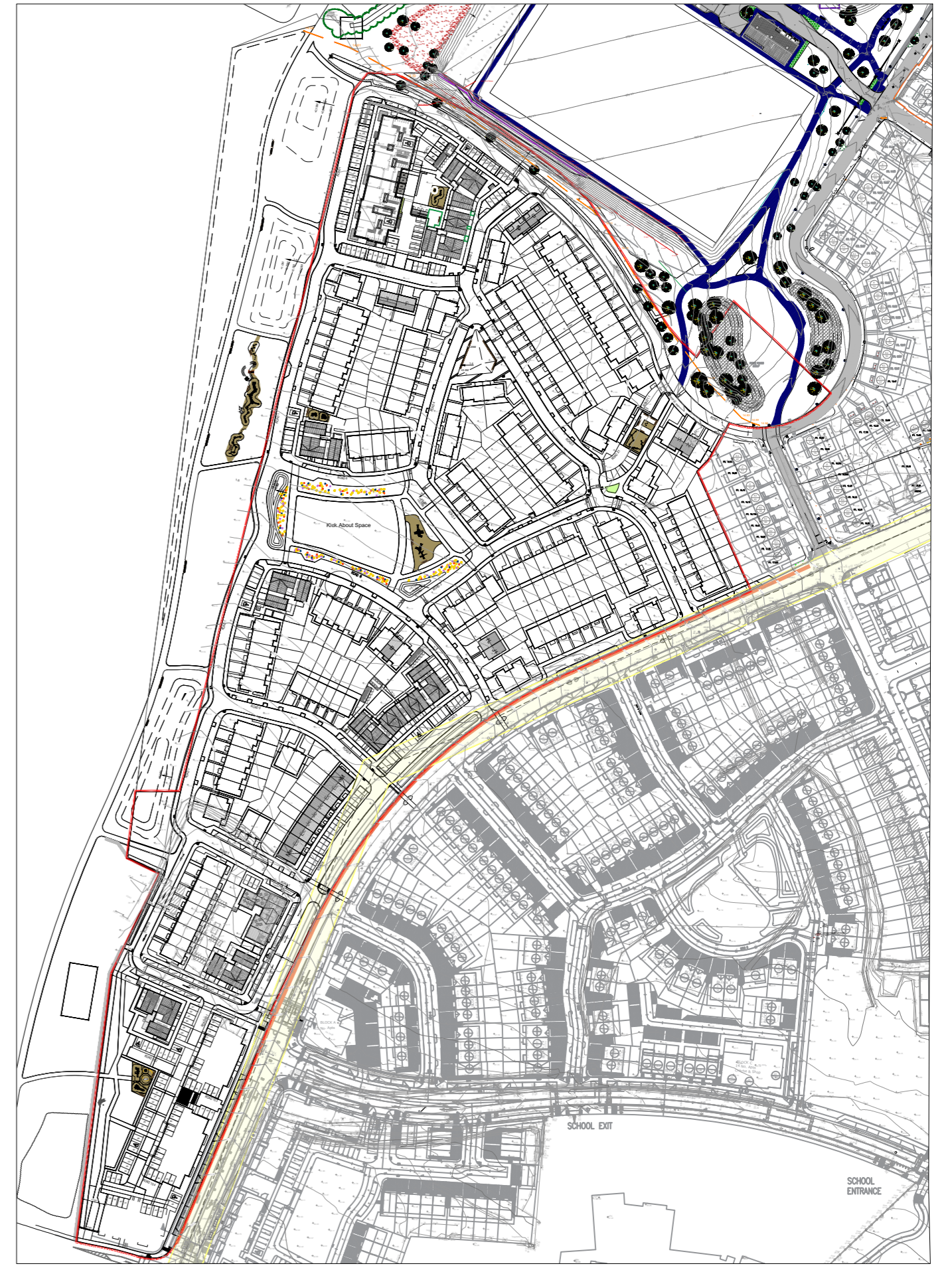




Play Area 1 in Public Open Space - 479M2



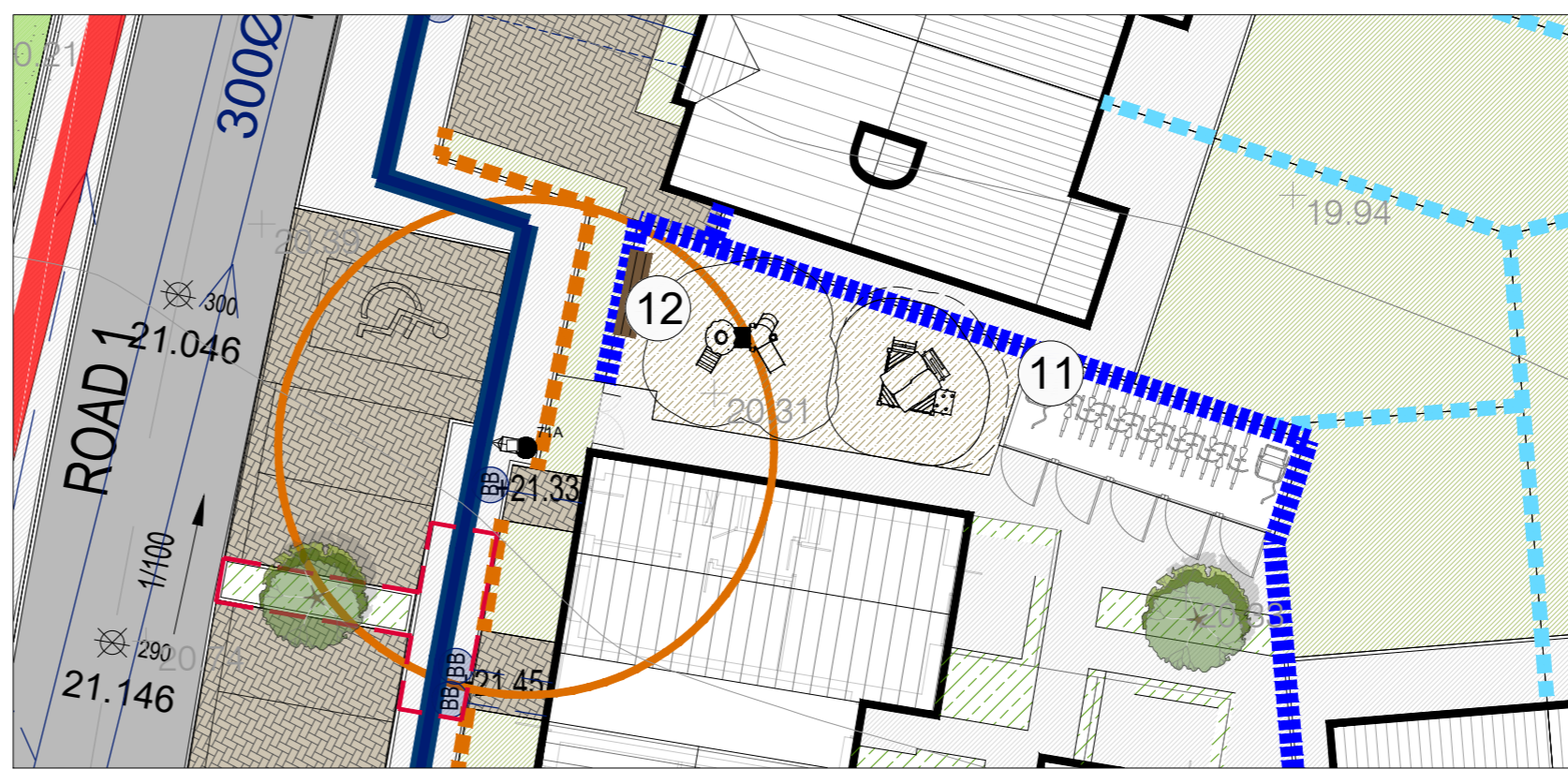
Play Area 4 in Private / Communal Open Space - 101M2



Play Area Location Plan



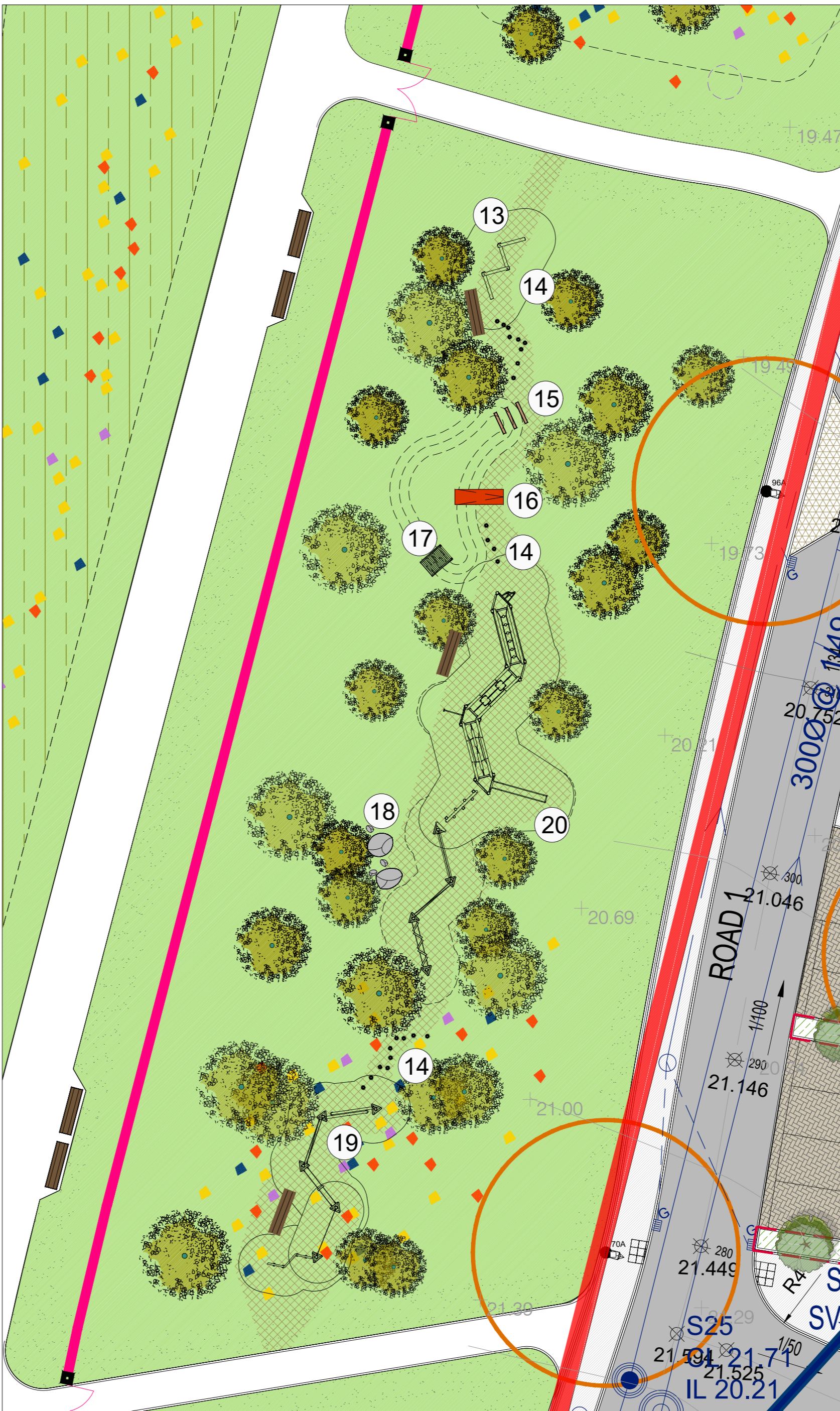
Play Area 2 in Public Open Space - 174M2



Playground 5 in Private / Communal Open Space - 48M2



Playground 3 (Under 6yrs) in Private / Communal Open Space - 136M2



Playground 6 in Public Open Space - 300M2

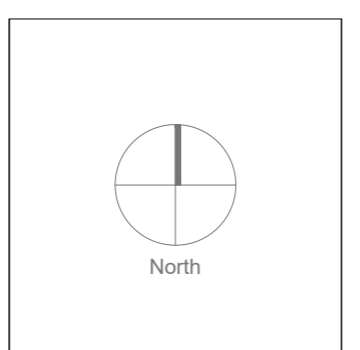
Legend

- Site Boundary
- Proposed Amenity grass areas to public open space; See D03 drawing LD-01-PP for details.
- Proposed Amenity grass areas to public open space within Regional Park; See D03 drawing LD-01-PP for details.
- Proposed meadow grass area, "Countyside Mix" with annuals and perennials, supplied by Annweigh; application rate: 1kg to 1000M2, or similar and approved.
- Proposed grass areas within private ownership; See D03 drawing LD-01-PP for details.
- Proposed grass areas within semi private ownership; See D03 drawing LD-01-PP for details.
- Proposed softscape areas within semi private ownership, positioned within 450mm clean topsoil (imported if necessary) to areas shown.
- Proposed softscape areas within public open space, positioned within 450mm clean topsoil (imported if necessary) to areas shown.
- Existing hedgerow to be retained, cutting back by j off both sides and height will be important for regeneration. Infilled as necessary into existing topsoil to areas shown.
- Proposed open space tree planting - specimen species. See LD-01-PP for planting details.
- Proposed specimen street trees, to include the following (but not limited to) typical species. see LD-02-PP for planting details.
- Proposed bulb planting.
- Proposed mounding in locations shown, to a max 1:5 slope.
- Proposed brick piers and gating opportunity to tie into 1.6M high buff top railing (See Dwg BP-03-PP).
- Proposed 1.6M high buff top railing (See Dwg BP-03-PP).
- Bench: Supplied by Hartecaste - HC2026S Seat**
Recycled composite timber seat with arms rests. Length 1900mm. Root Fixed; Recommended concrete foundation 2000 x 800 x 150mm. See Dwg LD-02-PP.
- Archaeological Constraints to open space area
- Proposed bitmac surface to Road; to Engineers details.
- Proposed brushed concrete surface to footpath; to Engineers details.
- Proposed concrete block paving to driveways and parking bays.
- Proposed concrete block paving to raised tables.
- Proposed lighting column, showing 7Mdia. tree planting exclusion zone.
- Proposed play equipment to be set in Tiger Mulch
- Proposed rubber grass play matting

Equipment List

- 1 Play structure - 0-21629-703 or similar & approved. Supplied by Kaiser & Kuhne
- 2 Combi climber on tube pedestals - 0-55480-703 or similar & approved. Supplied by Kaiser & Kuhne
- 3 Balance Jump-over mushroom - square Dance, Product ref: 5553095; supplied by Eibe play or similar and approved.
- 4 Balance beginners walk, Product ref: 5553255; supplied by Eibe play or similar and approved.
- 5 Unimini Apista, Product ref: 8047371; supplied by Hags playground equipment or similar and approved.
- 6 Spring Toy Turtle, Product ref: 8049865; supplied by Hags playground equipment or similar and approved.
- 7 Swings, Product ref: 8067041; supplied by Hags playground equipment or similar and approved.
- 8 Uni Play Homaria, Product ref: 8009223; supplied by Hags playground equipment or similar and approved.
- 9 Active Trail combination, Product ref: 5250407100; supplied by Eibe play or similar and approved.
- 10 Paradise Spring Rocker Mouse Product ref: 54535706300; supplied by Eibe play or similar and approved.
- 11 Playo Play unit Lisa Product ref: 51100101110; supplied by Eibe play or similar and approved.
- 12 Minimondo Playunit Carnation Product ref: 55982401100; supplied by Eibe play or similar and approved.
- 13 Paradise balance station unit, Product ref: 54524106300; supplied by Eibe play or similar and approved.
- 14 Balance step 40 / 60 Product ref: 5553105/3115; supplied by Eibe play or similar and approved.
- 15 Sleeper steps
- 16 Basics add-on-slide wide GFRP ph 195cm Product ref: 54010510126; supplied by Eibe play or similar and approved.
- 17 Paradise Mountaineering ramp Harvis, Product ref: 54502606300; supplied by Eibe play or similar and approved.
- 18 Large stone / boulder seat/steps
- 19 Active trail combination 04, Product ref: 52504307100; supplied by Eibe play or similar and approved.
- 20 Unique Play Unit Titanos, Product ref: 52506001100 supplied by Eibe play or similar and approved.

Rev.	Date	Note
00	0000-00-00	00



General Notes



Project Name	Oldtown Phase 5	Drawing Name	Play Ground Facilities Plan
Status	Planning	Drawing No	PG-01-PP
Project No	16-015	Revision No	00
Scale	1:200	Drawn By	A.D.
Date	31/03/2022	Checked By	DOT
Linda Doyle Director +353 (0)87 267 4196 linda@doyle-o'troithigh.com	Dáithí O'Troithigh Premiere House +353 (0)86 300 3499 dath@doyle-o'troithigh.com	Office Address Premiere House 28-29 Upper Pembroke St Dublin 2	Contact mail@doyle-o'troithigh.com +353 (0)1 608 7782